



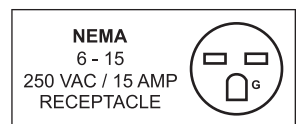
***Dough Sheeter***  
***Model BE-CN-2083-CSS***  
***Item 42154***  
***Instruction Manual***



*Revised - 01/10/2022*



Toll Free: 1-800-465-0234  
Fax: 905-607-0234  
Email: [service@omcan.com](mailto:service@omcan.com)  
[www.omcan.com](http://www.omcan.com)



# ***Table of Contents***

Model BE-CN-2083-CSS

---

<b>Section</b>	<b>Page</b>
General Information -----	3 - 4
Safety and Warranty -----	4 - 5
Technical Specifications -----	6
Installation -----	6
Operation -----	6
Maintenance -----	7
Troubleshooting -----	8 - 9
Parts Breakdown -----	10 - 12
Electrical Schematics -----	13
Notes -----	14
Warranty Registration -----	15



# General Information

---

Omcan Manufacturing and Distributing Company Inc., Food Machinery of America, Inc. dba Omcan and Omcan Inc. are not responsible for any harm or injury caused due to any person's improper or negligent use of this equipment. The product shall only be operated by someone over the age of 18, of sound mind, and not under the influence of any drugs or alcohol, who has been trained in the correct operation of this machine, and is wearing authorized, proper safety clothing. Any modification to the machine voids any warranty, and may cause harm to individuals using the machine or in the vicinity of the machine while in operation.

## CHECK PACKAGE UPON ARRIVAL

Upon receipt of an Omcan shipment please inspect for external damage. If no damage is evident on the external packaging, open carton to ensure all ordered items are within the box, and there is no concealed damage to the machine. If the package has suffered rough handling, bumps or damage (visible or concealed), please note it on the bill of lading before accepting the delivery and contact Omcan within 24 hours, so we may initiate a claim with the carrier. A detailed report on the extent of the damage caused to the machine must be filled out within three days, from the delivery date shown in the shipping documents. Omcan has no recourse for damaged products that were shipped collect or third party.

**Before operating any equipment, always read and familiarize yourself with all operation and safety instructions.**

Omcan would like to thank you for purchasing this machine. It's of the utmost importance to save these instructions for future reference. Also save the original box and packaging for shipping the equipment if servicing or returning of the machine is required.

---

Omcan Fabrication et distribution Compañie Limité et Food Machinery d'Amérique, dba Omcan et Omcan Inc. ne sont pas responsables de tout dommage ou blessure causé du fait que toute personne ait utilisé cet équipement de façon irrégulière. Le produit ne doit être exploité que par quelqu'un de plus de 18 ans, saine d'esprit, et pas sous l'influence d'une drogue ou d'alcool, qui a été formé pour utiliser cette machine correctement, et est vêtu de vêtements de sécurité approprié. Toute modification de la machine annule toute garantie, et peut causer un préjudice à des personnes utilisant la machine ou des personnes à proximité de la machine pendant son fonctionnement.

## VÉRIFIEZ LE COLIS DÈS RÉCEPTION

Dès réception d'une expédition d'Omcan veuillez inspecter pour dommages externes. Si aucun dommage n'est visible sur l'emballage externe, ouvrez le carton afin de s'assurer que tous les éléments commandés sont dans la boîte, et il n'y a aucun dommage dissimulé à la machine. Si le colis n'a subi aucune mauvaises manipulations, de bosses ou de dommages (visible ou cachée), notez-le sur le bond de livraison avant d'accepter la livraison et contactez Omcan dans les 24 heures qui suivent, pour que nous puissions engager une réclamation auprès du transporteur. Un rapport détaillé sur l'étendue des dommages causés à la machine doit être rempli dans un délai de trois jours, à compter de la date de livraison indiquée dans les documents d'expédition. Omcan n'a aucun droit de recours pour les produits endommagés qui ont été expédiés ou cueilli par un tiers transporteur.

# ***General Information***

---

**Avant d'utiliser n'importe quel équipement, toujours lire et vous familiariser avec toutes les opérations et les consignes de sécurité.**

**Omcan voudrais vous remercier d'avoir choisi cette machine. Il est primordial de conserver ces instructions pour une référence ultérieure. Également conservez la boîte originale et l'emballage pour l'expédition de l'équipement si l'entretien ou le retour de la machine est nécessaire.**

-----  
**Omcan Empresa De Fabricacion Y Distribucion Inc. Y Maquinaria De Alimentos De America, Inc. dba Omcan y Omcan Inc. no son responsables de ningun daño o perjuicio causado por cualquier persona inadecuada o el uso descuidado de este equipo. El producto solo podra ser operado por una persona mayor de 18 años, en su sano juicio y no bajo alguna influencia de droga o alcohol, y que este ha sido entrenado en el correcto funcionamiento de esta máquina, y ésta usando ropa apropiada y autorizada. Cualquier modificación a la máquina anula la garantía y puede causar daños a las personas usando la máquina mientras esta en el funcionamiento.**

## **REVISE EL PAQUETE A SU LLEGADA**

Tras la recepcion de un envio Omcan favor inspeccionar daños externos. Si no hay daños evidentes en el empaque exterior, Habra el carton para asegurarse que todos los articulos solicitados estén dentro de la caja y no encuentre daños ocultos en la máquina. Si el paquete ha sufrido un manejo de poco cuidado, golpes o daños (visible o oculto) por favor anote en la factura antes de aceptar la entrega y contacte Omcan dentro de las 24 horas, de modo que podamos iniciar una reclamación con la compañía. Un informe detallado sobre los daños causados a la máquina debe ser llenado en el plazo de tres días, desde la fecha de entrega que se muestra en los documentos de envío. Omcan no tiene ningun recurso por productos dañados que se enviaron a recoger por terceros.

**Antes de utilizar cualquier equipo, siempre lea y familiarizarse con todas las instrucciones de funcionamiento y seguridad.**

**Omcan le gustaría darle las gracias por la compra de esta máquina. Es de la mayor importancia para salvar estas instrucciones para futuras consultas. Además, guarda la caja original y el embalaje para el envío del equipo si servicio técnico o devolución de la máquina que se requiere.**

# ***Safety and Warranty***

---

Thanks for using this high performance, reversible dough sheeter. The unit will be an excellent assistant for making Danish bread, cheese cake and many other products. Before using this machine, please carefully read this manual and follow the procedures to operate the machine.

All the safety devices must be checked before operation. Turn the machine off immediately when defects or malfunctions are found. Contact Omcan Customer Service immediately at 1-800-465-0234.



# Safety and Warranty

---

- Check all warning signs on the machine.
- Clean up the water, oil and resin on the machine and its foundation. If any liquids are found, immediately clean it to avoid injury.
- Keep your body away from any moving parts of the machine.
- Do not let foreign objects fall into the machine while operating.
- Do not climb onto the machine while it is running.
- If any problems occur in the process of operation, press the Emergency Stop Button immediately.

**RESIDENTIAL USERS: Vendor assumes no liability for parts or labor coverage for component failure or other damages resulting from installation in non-commercial or residential applications. The right is reserved to deny shipment for residential usage; if this occurs, you will be notified as soon as possible.**

## 1 YEAR PARTS AND LABOR WARRANTY

Within the warranty period, contact Omcan Inc. at 1-800-465-0234 to schedule an Omcan authorized service technician to repair the equipment locally.

Unauthorized maintenance will void the warranty. Warranty covers electrical and part failures, not improper use.

Please see <https://omcan.com/disclaimer> for complete info.

### WARNING:

The packaging components are classified as normal solid urban waste and can therefore be disposed of without difficulty.

In any case, for suitable recycling, we suggest disposing of the products separately (differentiated waste) according to the current norms.

**DO NOT DISCARD ANY PACKAGING MATERIALS IN THE ENVIRONMENT!**

# Technical Specifications

---

Model	BE-CN-2083-CSS
Electrical	220 V / 60 Hz / 1
Power	0.75 HP/ 0.55 kW
Roller Size (Dia. x W)	3.5" x 20.5" / 88 x 520mm
Roller Adjustable Gap	1 - 35mm
Conveyor Belt Width	19.75" / 502mm
Conveyor Width	22.5" / 572mm
Conveyor Belt Speed	18m/min - 32m/min
Roller Speed	124r/min
Maximum Dough Capacity	11 lbs. / 5 kgs.
Maximum Working Position Dimensions	35" x 88" x 25.6" / 889 x 2235 x 650mm
Resting Position Dimensions (W x H)	25.5" x 36.25" / 648 x 921mm
Weight	275.6 lbs. / 125 kgs.
Item Number	42154

## Installation

---

1. Installation must be performed on a flat, dry surface with a stable temperature environment. Press down pedals of active wheels to lock the machine.
2. Follow the instructions on the plaque of electrical cabinet to connect power supply. The breaker for power supply should be installed on the wall with 1.7 m height from the floor.
3. Pull conveyor straight, put down the table and then put down both safety guards.
4. Then check the movement of the conveyors. Press the left-hand side pedal and the conveyors move left. Press the right-hand side pedal and the conveyors move right. If the movement is in the wrong direction, change the two wires of the power supply and re-test the machine.
5. The power cord must be grounded.

## Operation

---

1. When using machine, set the thickness handle to the most left position.
2. **NOTE:** Do not put hands into safety guard.
3. Switch the power off and disconnect from the socket when cleaning.
4. Lift up safety guards after operation and then turn off power switch.

# Maintenance

---

**ALL MAINTENANCE TO BE PERFORMED BY QUALIFIED TECHNICIANS.**

## **CHANGING GEARS (FOR QUALIFIED TECHNICIANS ONLY)**

Switch the power off then use a screw driver to dismantle the side plate of lower machine body. Disconnect the 3 electrical wires on the connecting box. Lift up the safety guards then set the thickness handle to scale "0". Use the alan-key M5 to open the cover and take out the gear housing, then replace the gears. After replacement, reverse the procedures and set the thickness handle to scale "0" to reassemble.

## **REPLACING THE DRIVING ROLLER AND BEARING**

Switch the power off and lift up the safety guards. Use the alan-key to open the cover. Next, loosen the nuts of bearing, use a cross type screw driver to move bearing through the joint or roller and bearing. Replace the roller and assemble by reversing the procedures.

## **CHANGE CONVEYORS**

- Remove the roller by following the procedures mentioned above.
- Apply spanner M 12 to take the belts on roller and remove product tray.
- Apply spanner M 23 to loose the nuts of roller.
- Use spanner M 19 to loosen the belts of the support separate the table.
- Use spanner M 14 to take away the belts of the table holder and separate them.
- Dismantle the table and belts for replacement.
- Assembly by reversing the procedure.
- The tightness of belts should be correct. When the machine is running, press the belts slightly and check if there is a slip between the belts and roller.

## **CLEANING:**

After work is finished every day, please turn the power switch off, then perform the cleaning process as stated below:

1. Fold the conveyor belt plate, then clean the residual dough and sundries that remain on the conveyor belt roller.
2. Clean the residual dough that is left on the upper and lower roller and scraper. Ensure that there is nothing left on the roller and scraper.

**Note: Do not use pressurized water jets to clean the unit. Do not use a knife or hard object to scrape the rollers, use a damp cloth instead. Do not use stainless steel or other metal blades to scrape the conveyor belt surface, use the plastic scraper to clean the conveyor belt surface.**

# Troubleshooting

Problem	Possible Causes
The machine does not work.	Is the power supply on?
	Is the power switch on?
	Has the safety guard been put down?
	Lift safety guard, start level and check if you hear a click from the limit switch.
Electrical cabinet continuously vibrates.	Is the belt loose?
	Are the wires improperly connected?
	Is there something inside the electrical cabinet?
The machine only works on one side.	Has the breaker failed?
	The wiring of the Level or limit switch failed?
	Is the wiring of the motor incorrect?
	Is the electricity not three phase?
One conveyor side works while the other side has stopped.	The gear is worn out.
	Conveyor belt is not tight enough.
Thickness handle cannot stay fixed and falls downward.	If machine runs smoothly when toward the right-hand side but does not when toward left-hand side, this means the chain inside the rear of the machine body is too loose. Set the handle at a scale of 15-20, and use a screw driver to open the cover. Apply spanner to adjust motor plate to tighten chain. Check if handle can be operated smoothly.
Conveyor moves toward one side during production.	Adjusting the nuts to let the belt move straight. For example, if belt moves toward the rear side, loosen the front nut. When adjusting the nuts, make sure that the speed of belt is the same as roller and there are no gaps between the roller and belt.
Noise from roller.	Bearing wore out.
	If noise comes from the pressing roller & scraper and conveyor, something is stuck on the active roller. To clean the active roller simply lift the table. Refer to assembly drawing for active roller and passive roller position.



# Troubleshooting

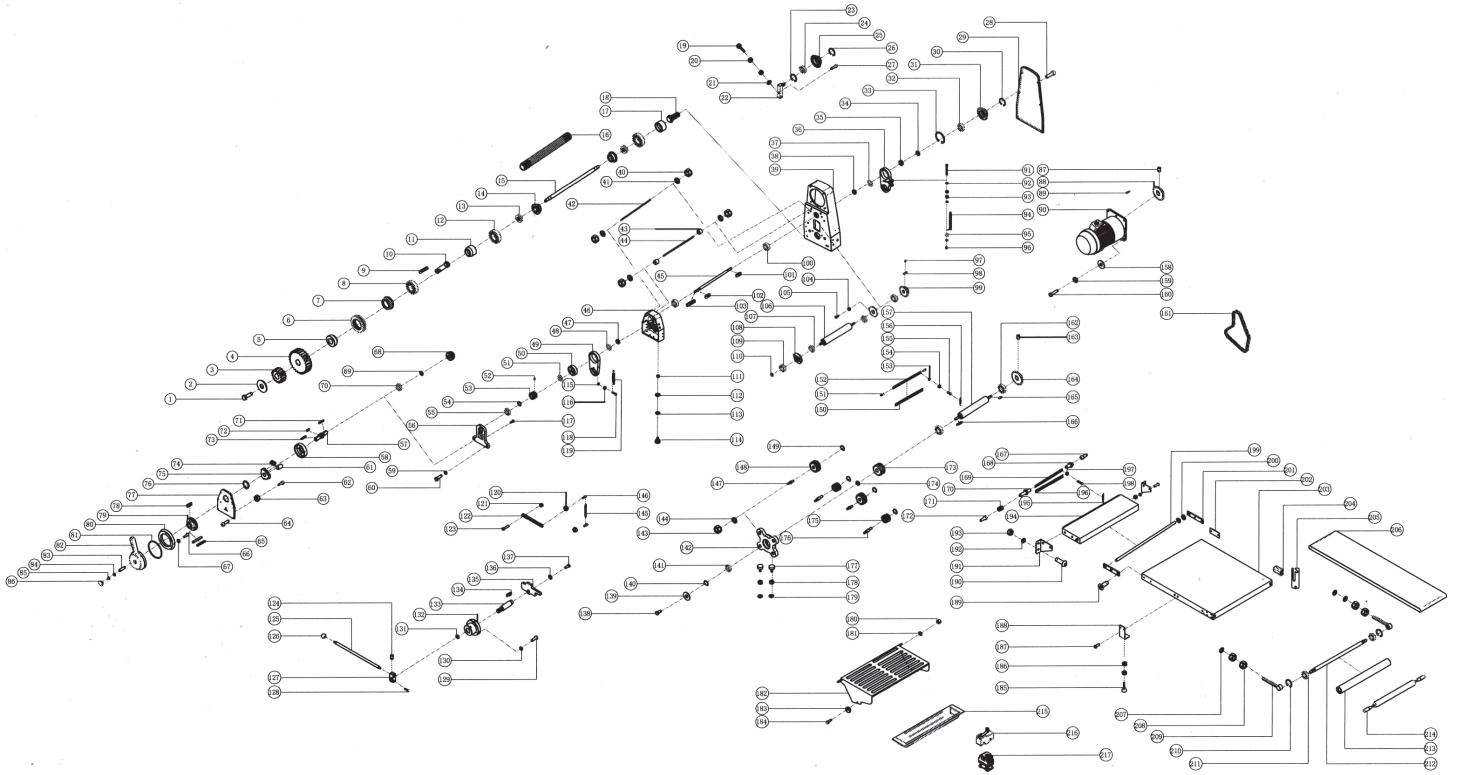
---

Conveyor is too tight.	Machine is located in a humid area and this may cause the conveyor to become shorter. If conveyors arc is too tight, loose nuts during regular inspection. If conveyors are too tight, it may:
	Not have sufficient horse power.
	Damaged bearing & shaft of active roller and passive roller.
	Over load and damage to the driving gear.

**NOTE: FOR ELECTRICAL AND MECHANICAL REPAIRS, PLEASE CONTACT OMCAN AT 1-800-465-0234.**

# Parts Breakdown

Model BE-CN-2083-CSS 42154



# Parts Breakdown

## Model BE-CN-2083-CSS 42154

Item No.	Description	Position	Item No.	Description	Position	Item No.	Description	Position
AD197	Outer Hexagon Screw Arbor for 42154	1	AD213	Tooth Bar for 42154	42	66790	Screw for 42154	83
AD198	Flat Gasket for 42154	2	66759	Rubber Sleeve for 42154	43	AD207	Lockwasher for 42154	84
66749	Gear (M3 15T) for 42154	3	66758	Fixed Lever for 42154	44	66707	Soft Hat for 42154	85
66748	Gear (M3 27T) for 42154	4	66763	Shaft for 42154	45	AD231	Buckle Head for 42154	86
66746	Washer for 42154	5	66783	Base for 42154	46	AD215	Tighten Screw for 42154	87
66747	Bearing for 42154	6	66729	Washer for 42154	47	66809	Gear (24T) for 42154	88
66785	Bearing Sleeve for 42154	7	AD214	Flat Gasket for 42154	48	AD273	Flat Key (Type C) for 42154	89
66784	Bearing for 42154	8	66731	Roller Adjusting Block for 42154	49	AD305	Motor for 42154	90
AD199	Flat Key (Type C) for 42154	9	66730	Eccentric Mounting for 42154	50	AD249	Outer Hexagon Bolt for 42154	91
44797	Shaft for 42154	10	AD214	Flat Gasket for 42154	51	AD198	Flat Gasket for 42154	92
66781	Bearing Sleeve for 42154	11	AD215	Tighten Screw for 42154	52	66835	Nut for 42154	93
AD200	Bearing for 42154	12	AD216	Brake Apparatus Gear for 42154	53	AD250	Draw Spring for 42154	94
AD201	Thrust Bearing for 42154	13	AD217	Washer (3mm) for 42154	54	AD198	Flat Gasket for 42154	95
AD301	Aluminum Block for 42154	14	66742	Bearing for 42154	55	66835	Nut for 42154	96
AD302	Roller Shaft for 42154	15	AD218	Brake Apparatus Bearing Fixed Seat for 42154	56	AD215	Tighten Screw for 42154	97
44800	Active Roller for 42154	16	AD238	Brake Apparatus Rotating Shaft for 42154	57	AD252	Flat Key (Type C) for 42154	98
AD204	Bearing Holder for 42154	17	AD237	Brake Apparatus Fixed Seat for 42154	58	66808	Gear (18T) for 42154	99
AD205	Adjusting Bolt for 42154	18	AD207	Lockwasher for 42154	59	66689	Bearing for 42154	100
AD206	Rubber Head Screw for 42154	19	AD239	Outer Hexagon Bolt for 42154	60	AD227	Flat Key (Type A) for 42154	101
66795	Nut for 42154	20	AD236	Brake Apparatus Cylinder for 42154	61	AD227	Flat Key (Type A) for 42154	102
AD207	Lockwasher for 42154	21	66770	Screw for 42154	62	AD221	Flat Key (Type C) for 42154	103
AD208	Fixed Axis for 42154	22	66818	Soft Hat for 42154	63	AD256	Nut for 42154	104
AD209	Clamp Spring for Hole Use for 42154	23	AD235	Inner Hexagon Bolt for 42154	64	AD257	Inner Hexagon Head Screw for 42154	105
AD210	Bearing for 42154	24	AD234	5x30 Split Pin for 42154	65	66771	Upper Roller for 42154	106
AD211	Chain Wheel for 42154	25	AD233	Inner Hexagon Bolt for 42154	66	66689	Bearing for 42154	107
AD212	Clamp Spring for Shaft Use for 42154	26	AD232	Lockwasher for 42154	67	66765	Roller Adjustment Block for 42154	108
66708	Screw for 42154	27	AD219	Brake Apparatus Gear for 42154	68	66689	Bearing for 42154	109
AD235	Inner Hexagon Bolt for 42154	28	AD220	Washer (ø22xø32x3mm) for 42154	69	AD258	Clamp Spring for Shaft Use for 42154	110
AD303	Cover for 42154	29	66742	Bearing for 42154	70	66801	Soft Hat for 42154	111
AD248	Clamp Spring for Shaft Use for 42154	30	AD221	Flat Key (Type C) for 42154	71	AD244	Flat Gasket for 42154	112
AD247	Chain Wheel (M3 21T) for 42154	31	AD222	Flat Key (Type A) for 42154	72	AD244	Flat Gasket for 42154	113
66689	Bearing for 42154	32	AD223	Flat Key (Type A) for 42154	73	AD306	Foot Pad for 42154	114
AD246	Clamp Spring for Hole Use for 42154	33	AD224	Spring for 42154	74	AD198	Flat Gasket for 42154	115
66729	Washer for 42154	34	AD225	Brake Apparatus for 42154	75	66835	Nut for 42154	116
66730	Eccentric Mounting for 42154	35	AD226	Clamp Spring for Shaft Use for 42154	76	AD241	Inner Hexagon Bolt for 42154	117
AD245	Roller Adjusting Block for 42154	36	66714	Cover for 42154	77	AD240	Inner Hexagon Bolt for 42154	118
AD214	Flat Gasket for 42154	37	AD227	Flat Key (Type A) for 42154	78	AD242	Draw Spring for 42154	119
66729	Washer for 42154	38	AD228	Brake Apparatus Rotating Disc for 42154	79	AD256	Nut for 42154	120
AD304	Machine Wall for 42154	39	AD229	Dial Disc for 42154	80	66835	Nut for 42154	121
66795	Nut for 42154	40	AD230	Seal Ring for 42154	81	66726	Gear Rack for 42154	122
AD207	Lockwasher for 42154	41	66690	Adjusting Plate for 42154	82	AD265	Inner Hexagon Head Screw for 42154	123

# Parts Breakdown

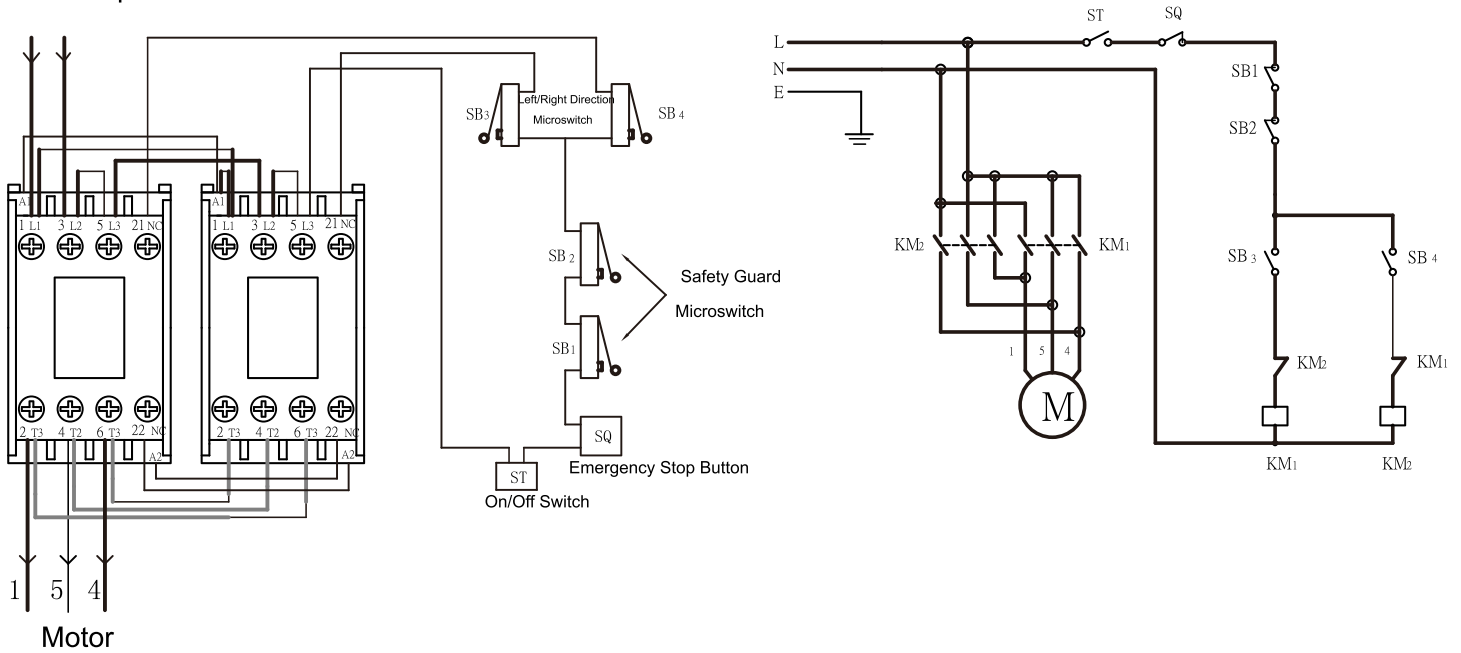
## Model BE-CN-2083-CSS 42154

Item No.	Description	Position	Item No.	Description	Position	Item No.	Description	Position
AD267	Tighten Screw for 42154	124	AD253	Draw Spring for Upper Scraper for 42154	156	AD310	Foot Rack for 42154	188
66709	Adjusting Lever for 42154	125	66774	Lower Roller for 42154	157	AD274	Cross Countersunk Screw for 42154	189
AD268	Black Plastic Ball for 42154	126	AD207	Lockwasher for 42154	158	AD274	Cross Countersunk Screw for 42154	190
66706	Adjusting Seat for 42154	127	AD207	Lockwasher for 42154	159	66797	Fixed Plate for 42154	191
AD240	Inner Hexagon Bolt for 42154	128	66790	Screw for 42154	160	AD207	Lockwasher for 42154	192
AD197	Outer Hexagon Screw Arbor for 42154	129	AD308	Chain for 42154	161	66795	Nut for 42154	193
AD198	Flat Gasket for 42154	130	66772	Bearing for 42154	162	66796	Bracket Support Plate for 42154	194
AD266	Flat Gasket for 42154	131	AD215	Tighten Screw for 42154	163	66786	Draw Spring for 42154	195
66701	Permanent Seat for 42154	132	66808	Gear (18T) for 42154	164	66824	Lower Knife for 42154	196
66700	Shaft for 42154	133	AD252	Flat Key (Type C) for 42154	165	66818	Soft Hat for 42154	197
AD222	Flat Key (Type A) for 42154	134	AD223	Flat Key (Type A) for 42154	166	AD269	Cross Head Screw for 42154	198
66728	Adjusting Sheet for 42154	135	AD275	Inner Hexagon Screw for 42154	167	66825	Shaft for 42154	199
AD198	Flat Gasket for 42154	136	AD278	Dowel Pin for 42154	168	AD296	Spacer for 42154	200
AD197	Outer Hexagon Screw Arbor for 42154	137	66823	Lower Knife Sleeve for 42154	169	66800	Link Block for 42154	201
AD263	Outer Hexagon Bolt for 42154	138	AD277	Dowel Pin for 42154	170	AD281	Screw Arbor Fixed Lever for 42154	202
AD207	Lockwasher for 42154	139	AD276	Compression Spring for 42154	171	66826	Bracket Board for 42154	203
AD246	Clamp Spring for Hole Use for 42154	140	AD275	Inner Hexagon Screw for 42154	172	AD280	Big Supporting Plate Fixed Seat for 42154	204
66742	Bearing for 42154	141	66752	Gear (M3 24T) for 42154	173	AD297	Fixed Seat for Rolling Pin for 42154	205
66739	Adjusting Block for 42154	142	66729	Washer for 42154	174	AD279	Conveyor Belt for 42154	206
66795	Nut for 42154	143	66753	Gear (M3 10T) for 42154	175	AD266	Flat Gasket for 42154	207
AD207	Lockwasher for 42154	144	66754	Lower Plastic Gear Shaft for 42154	176	66805	Nut for 42154	208
AD262	Draw Spring for 42154	145	AD272	Rubber Head Screw for 42154	177	66806	Adjusting Lever for 42154	209
AD257	Inner Hexagon Head Screw for 42154	146	66835	Nut for 42154	178	AD258	Clamp Spring for Shaft Use for 42154	210
66738	Upper Plastic Gear Shaft for 42154	147	AD198	Flat Gasket for 42154	179	66784	Bearing for 42154	211
66737	Gear (M3 15T) for 42154	148	66816	Microswitch Sleeve for 42154	180	66829	Active Shaft for 42154	212
AD261	Circlip for 42154	149	AD207	Lockwasher for 42154	181	66828	Conveyor Roller for 42154	213
AD307	Upper Scraper for 42154	150	66815	Safety Guard for 42154	182	AD065	Rolling Pin for 42154	214
AD260	Dowel Pin for 42154	151	66817	Safety Guard Rubber Roller for 42154	183	66814	Flour Tray for 42154	215
66821	Knife Sleeve Pin for 42154	152	66770	Screw for 42154	184	AD311	Microswitch for 42154	216
AD255	Lockwasher for 42154	153	AD309	Supporting Plate Food Pad for 42154	185	AD312	AC Contactor for 42154	217
66818	Soft Hat for 42154	154	66835	Nut for 42154	186			
AD254	Cross Head Bolt for 42154	155	AD269	Cross Head Screw for 42154	187			

# Electrical Schematics

## Model BE-CN-2083-CSS 42154

Power Input



E	Ground Wire	L	Power Input	SB1	Safety Guard Microswitch	SB4	Left/Right Direction Microswitch
KM1	AC Contactor	M	Motor	SB2	Safety Guard Microswitch	ST	On/Off Switch
KM2	AC Contactor	N	Power Input	SB3	Left/Right Direction Microswitch	SQ	Emergency Stop Button





# Warranty Registration

Thank you for purchasing an Omcan product. To register your warranty for this product, complete the information below, tear off the card at the perforation and then send to the address specified below. You can also register online by visiting:

Merci d'avoir acheté un produit Omcan. Pour enregistrer votre garantie pour ce produit, complétez les informations ci-dessous, détachez la carte au niveau de la perforation, puis l'envoyer à l'adresse spécifiée ci-dessous. Vous pouvez également vous inscrire en ligne en visitant:

Gracias por comprar un producto Omcan usted. Para registrar su garantía para este producto, complete la información a continuación, cortar la tarjeta en la perforación y luego enviarlo a la dirección indicada a continuación. También puede registrarse en línea en:

<https://omcan.com/warranty-registration/>

For mailing in Canada

Pour postale au Canada

Por correo en Canadá

For mailing in the US

Pour diffusion aux États-Unis

Por correo en los EE.UU.

**OMCAN**

PRODUCT WARRANTY REGISTRATION

3115 Pepper Mill Court,

Mississauga, Ontario

Canada, L5L 4X5

**OMCAN**

PRODUCT WARRANTY REGISTRATION

4450 Witmer Industrial Estates, Unit 4,

Niagara Falls, New York

USA, 14305

*or email to: [service@omcan.com](mailto:service@omcan.com)*



Purchaser's Information

Name: \_\_\_\_\_

Address: \_\_\_\_\_

City: \_\_\_\_\_ Province or State: \_\_\_\_\_ Postal or Zip: \_\_\_\_\_

Country: \_\_\_\_\_

Dealer from which Purchased: \_\_\_\_\_

Dealer City: \_\_\_\_\_ Dealer Province or State: \_\_\_\_\_

Invoice: \_\_\_\_\_

Model Name: \_\_\_\_\_ Model Number: \_\_\_\_\_

Machine Description: \_\_\_\_\_

Date of Purchase (MM/DD/YYYY): \_\_\_\_\_

Would you like to extend the warranty?  Yes  No

Company Name: \_\_\_\_\_

Telephone: \_\_\_\_\_

Email Address: \_\_\_\_\_

Type of Company:

Restaurant  Bakery  Deli

Butcher  Supermarket  Caterer

Institution (specify): \_\_\_\_\_

Other (specify): \_\_\_\_\_

Serial Number: \_\_\_\_\_

Date of Installation (MM/DD/YYYY): \_\_\_\_\_

**Thank you for choosing Omcan | Merci d'avoir choisi Omcan | Gracias por elegir Omcan**



Since 1951 Omcan has grown to become a leading distributor of equipment and supplies to the North American food service industry. Our success over these many years can be attributed to our commitment to strengthen and develop new and existing relationships with our valued customers and manufacturers. Today with partners in North America, Europe, Asia and South America, we continually work to improve and grow the company. We strive to offer customers exceptional value through our qualified local sales and service representatives who provide convenient access to over 6,500 globally sourced products.

---

Depuis 1951 Omcan a grandi pour devenir un des “leaders” de la distribution des équipements et matériel pour l’industrie des services alimentaires en Amérique du Nord. Notre succès au cours de ces nombreuses années peut être attribué à notre engagement à renforcer et à développer de nouvelles et existantes relations avec nos clients et les fabricants de valeur. Aujourd’hui avec des partenaires en Amérique du Nord, Europe, Asie et Amérique du Sud, nous travaillons continuellement à améliorer et développer l’entreprise. Nous nous efforçons d’offrir à nos clients une valeur exceptionnelle grâce à nos ventes locales qualifiées et des représentants de service qui offrent un accès facile à plus de 6500 produits provenant du monde entier.

---

Desde 1951 Omcan ha crecido hasta convertirse en un líder en la distribución de equipos y suministros de alimentos en América del Norte industria de servicios. Nuestro éxito en estos años se puede atribuir a nuestro compromiso de fortalecer y desarrollar nuevas relaciones existentes con nuestros valiosos clientes y fabricantes. Hoy con socios de América del Norte, Europa, Asia y América del Sur, que trabajan continuamente para mejorar y crecer la empresa. Nos esforzamos por ofrecer a nuestros clientes valor excepcional a través de nuestro local de ventas y representantes de los servicios que proporcionan un fácil acceso a más de 6,500 productos con origen a nivel mundial.

